

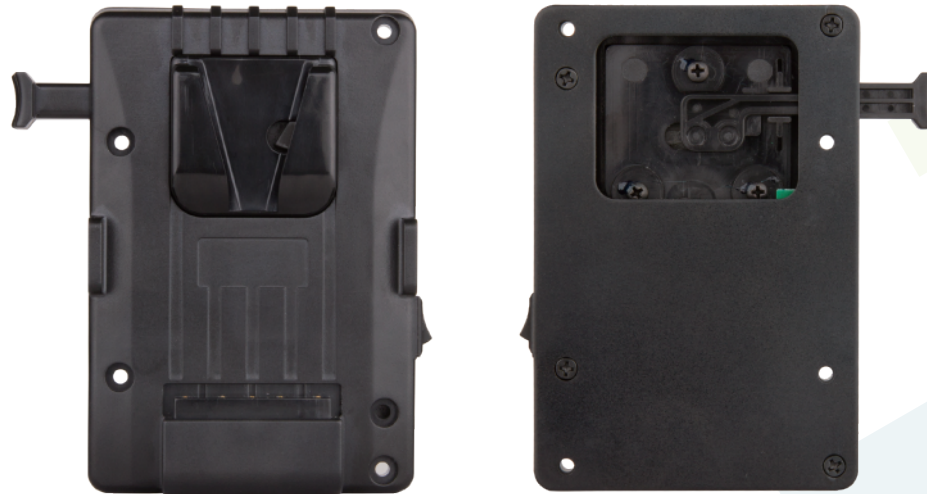
S-7010S

SWIT®

V-mount plate with multi-DC out

Introduction:

- ◆ To adapt V-mount power solutions
- ◆ Build-in D-tap DC output socket
- ◆ Build-in 7.2V pole-tap DC output socket
- ◆ Build-in 5V/1A USB output socket
- ◆ Robust thickened power pins



S-7010S adopts new robust thickened power pins, fully contact with batteries, and reduce the contact resistance from 2.4mΩ to 0.8mΩ, to ensure safety when high current pass through from battery.



Provide 1x D-tap output (Max load 10A)



Provide 1x 7.2V/3A Pole-tap DC output (5.5/2.1mm) and 1x 5V/1A USB output

SWIT Electronics Co., Ltd.

Website: www.swit.cc Tel: +86 25 85805753
Email: contact@swit.cc Fax: +86 25 85805296